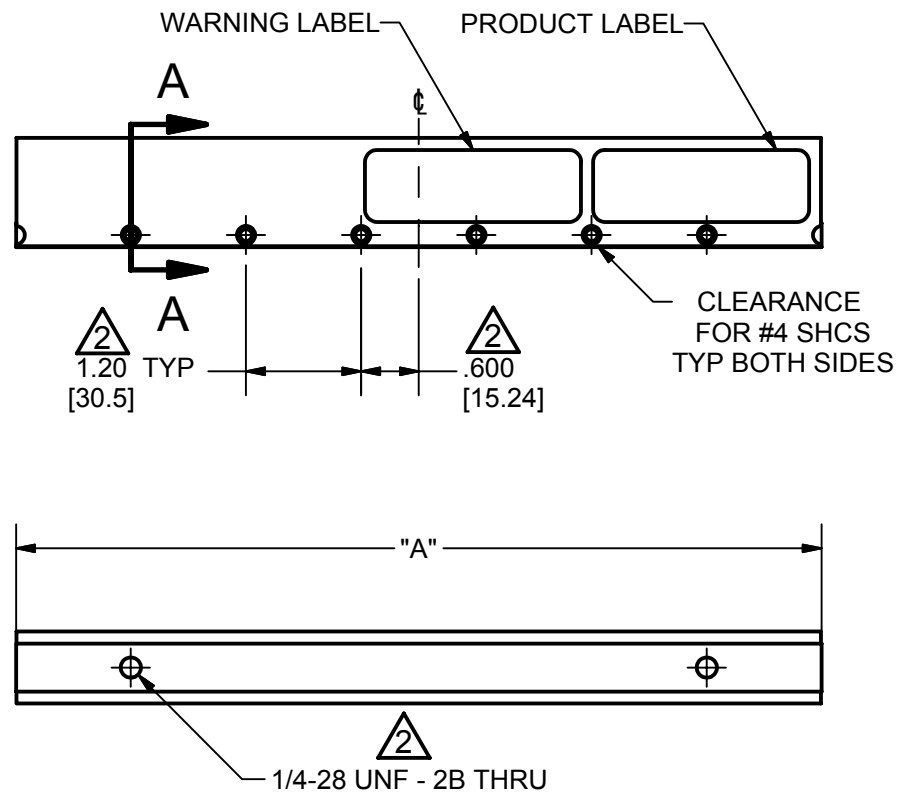
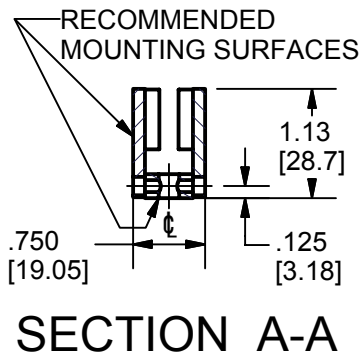


PART NUMBER	"A"
LMDT-P12-7.2FS	7.19 [182.6]
LMDT-P12-8.4FS	8.39 [213.1]
LMDT-P12-9.6FS	9.59 [243.6]
LMDT-P12-10.8FS	10.79 [274.1]
LMDT-P12-12.0FS	11.99 [304.5]
LMDT-P12-13.2FS	13.19 [335.0]
LMDT-P12-14.4FS	14.39 [365.5]
LMDT-P12-15.6FS	15.59 [396.0]
LMDT-P12-16.8FS	16.79 [426.5]
LMDT-P12-18.0FS	17.99 [456.9]
LMDT-P12-19.2FS	19.19 [487.4]
LMDT-P12-20.4FS	20.39 [517.9]
LMDT-P12-21.6FS	21.59 [548.4]
LMDT-P12-22.8FS	22.79 [578.9]
LMDT-P12-24.0FS	23.99 [609.3]

REVISION HISTORY						
REV	ECO#	ZONE	DESCRIPTION	BY	DATE	APPROVED
A	-	ALL	INITIAL RELEASE	JAW	4/1/2004	DJC
B	159	-	CHANGES PER ECO# 159	JAW	1/7/2005	DJC
C	188	-	CHANGES PER ECO#188	PMJ	11/3/2005	JAW



- NOTES:
- INCHES [MILLIMETERS].
 - CONSULT FACTORY FOR DETAILED DRAWINGS OF BOTTOM AND SIDE MOUNT OPTIONS. CENTERLINE MAY HAVE A FASTENER OR MOUNTING HOLE DEPENDING ON TRACK LENGTH.
 - REFER TO DRAWING 11046 FOR PART NUMBERING CONVENTION.
 - TRACK SECTIONS CAN BE CASCADED TO FORM ANY LENGTH. 1.20 [30.5] HOLE SPACING AND MOUNTING SURFACES MUST BE MAINTAINED.
 - LMDT-P12-8.4FS TRACK SHOWN.
 - CONSULT FACTORY FOR TRACK LENGTHS GREATER THAN 24" [609.6].

UNLESS OTHERWISE SPECIFIED:
 - DIMENSIONS ARE IN INCHES [mm]
 - TOLERANCES ON:
 X.XX ± 0.01 [± 0.25 mm]
 X.XXX ± 0.005 [± 0.125 mm]
 X/X ± 1/32
 ANGLES ± 0°30'
 DRAWING CONFORMS TO ANSI Y14.5

125 ✓

THESE DRAWINGS AND SPECIFICATIONS ARE THE PROPERTY OF AIREX CORP. ARE PROPRIETARY, ISSUED IN STRICT CONFIDENCE, AND SHALL NOT BE REPRODUCED, CONVEYED OR USED WITHOUT PRIOR WRITTEN PERMISSION.

DRAWN	John W	DATE	3/22/2004
CHECKED	PMJ	DATE	12/16/2005
APPROVED	JAW	DATE	12/16/2005
RELEASED	PMJ	DATE	12/16/2005
SCALE	NTS	SHEET	3 OF 3
MATERIAL	N/A	SIZE	A
FINISH	N/A	PART NO	11021
		REV	C
		NEXT LEVEL ASSEMBLY	-

AIREX CORPORATION
 Precision Electromagnetic Component Design and Manufacturing
 www.airex.com

TITLE: P12 SERIES TABULATED SPECIFICATION DRAWING - MAGNET TRACK